

# IP CAMERA EXPID v 1.0



MAX RES.  
2688x1520

FULL HD  
1920x1080

4 MEGA  
PIXELS

IMPACT  
RESISTANCE

F/2.8 APERTURE

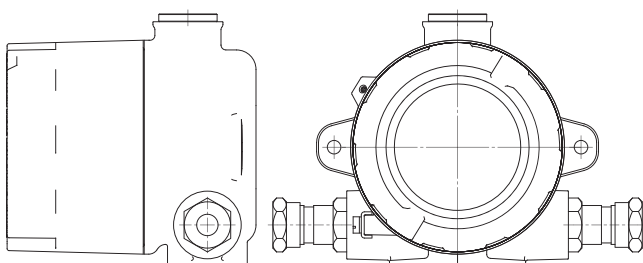
ATEX & IECEx CERTIFICATES

LEGEND ON THE LAST PAGE

Ex II 2G Ex db IIC T6 Gb

Ex II 2D Ex tb IIIC T85°C Db

Ex I M2 Ex db I Mb



The **EXPID** is an IP camera equipped with high quality 4 megapixels CMOS sensor. Camera allows to use two independent video streams as well as two compression methods H.264 or MJPEG with adjustable bandwidth from 32Kbps to 16Mbps

Day & Night functionality, mechanical infrared filter and EXIR infrared illuminator combined with WDR and 3D DNR digital filters provide high quality detailed preview under any lighting conditions. The camera can be powered by 12V DC external power supply or cost effectively by Ethernet cable (PoE 802.3).

The camera is compatible with ONVIF which ensures seamless cooperation with any devices supporting IP protocol. The **EXPID** with its IP66/ IP68 ingress protection level is designed to withstand the harshest environments, including offshore drilling, gas & oil and dust applications.

## # FEATURES

- ATEX / IECEx ready
- High resolution up to 4MP
- Applicable in Zone 1, 21 and mining industry
- Full HD 1080P real-time preview
- 3D DNR digital noise reduction
- WDR wide dynamic range
- BLC back light compensation
- EXIR infrared illuminator range from 20 to 30m
- Powered by PoE or 12VDC external power supply
- High ingress protection level: IP66/ IP68
- 7J impact resistance
- Compatibility with ONVIF
- Casing made from aluminium alloys or stainless steel

## # TYPICAL APPLICATIONS

- Hazardous areas monitoring
- Remote process supervision
- Industrial vision systems



## # TECHNICAL DATA

Image sensor	1/3" CMOS
Image resolution (px)	4Mpix (2688 × 1520)
Video compression	H.264 / MJPEG / H.264+
Signal system	PAL / NTSC
Day & Night	IR cut filter
Frame rate	20 fps @ 4Mpx, 25 fps @ 2Mpx(1920×1080)
Lens	f=2.8mm (angle of view 92,5°), F2.0
Min. illumination	0,01 Lux (colour) / 0 Lux (mono with IR iluminator on)
Camera features	trueWDR, BLC, 3DNR, ANR
Infrared Illuminator	EXIR range from 20 to 30m
Ingress protection	IP66 / IP68
Dimensions	190mm x 126mm x 128mm
Weight	2kg (for Group II), 3,5kg (for Group I)
Power supply	12V DC, PoE (802.3af)
Power consumption (W)	5,5W / 7,5W (with IR iluminator ON)
Operating conditions	Temperature range -30°C ≤ Ta ≤ +40 °C   humidity 0%~90% non-condensing
Alarm trigger	Motion detection, tampering alarm
Communication interface	RJ45 10 M / 100 M Ethernet
Compatibility	ONVIF, PSIA, CGI, ISAPI
Supported protocols	TCP/IP, ICMP, HTTP, HTTPS, FTP, DHCP, DNS, DDNS, RTP, RTSP, RTCP, PPPoE, NTP, UPnP, SMTP, SNMP, IGMP, 802.1X, QoS, IPv6, Bonjour.